

Technical Note

Auteur: Wim van Ommen
Gemaakt op: 6 December 2007
Bijgewerkt op: 6 December 2007

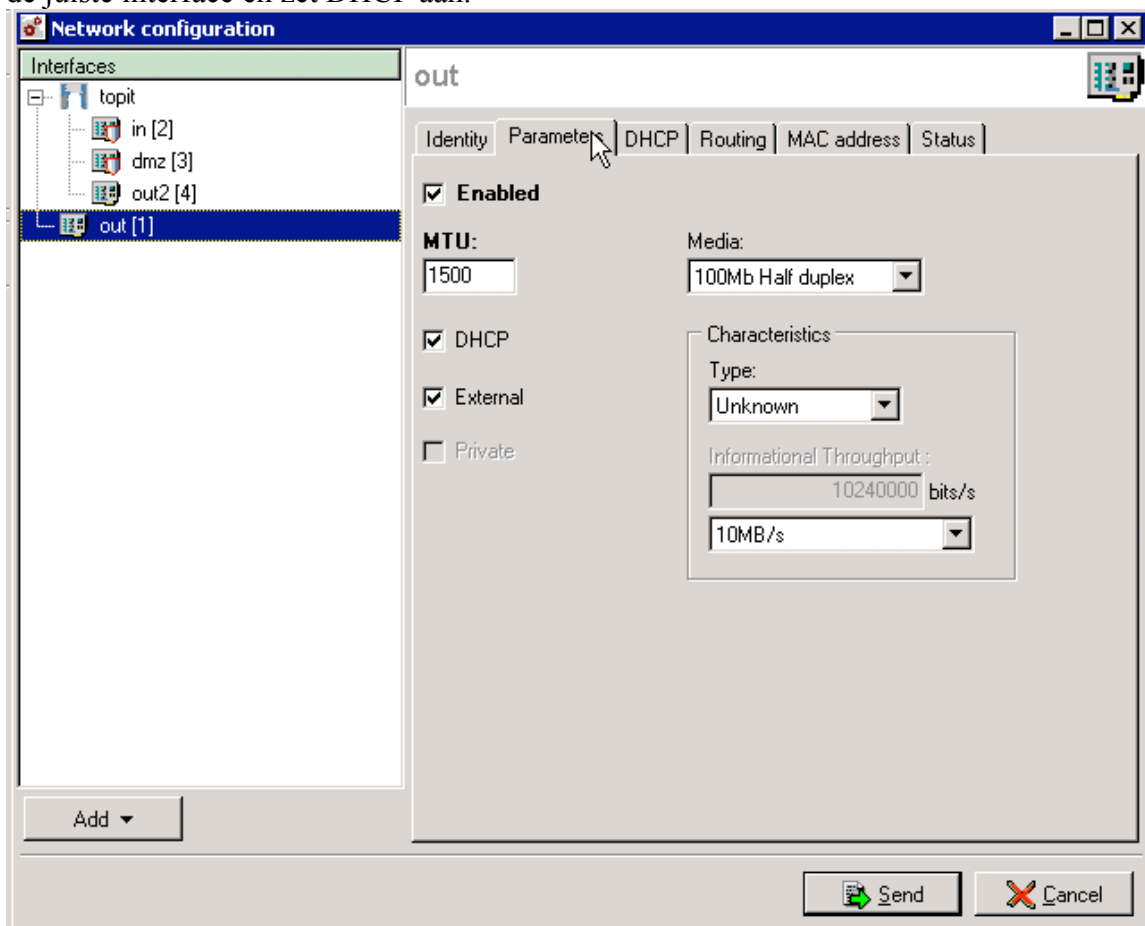


DHCP Met een NETASQ met os versie 7

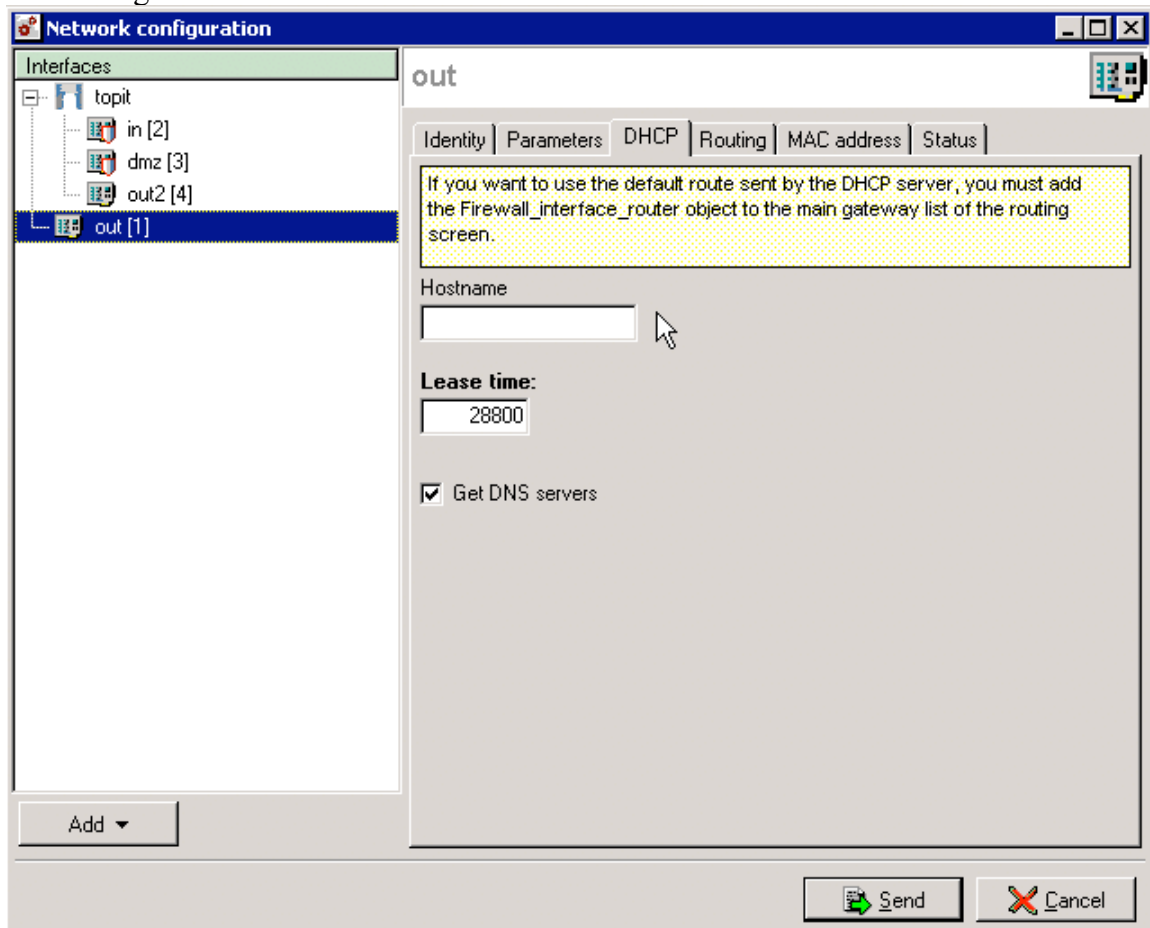
In de versie 7 van het NetASQ OS zijn een aantal wijzigingen gemaakt waardoor de instellingen voor DHCP op een andere manier gemaakt dienen te worden. Deze technote beschrijft hoe dit werkt.

DHCP instellen

Ga met de manager naar de Firewall en kies Network en vervolgens interfaces. Kies daar de juiste interface en zet DHCP aan.

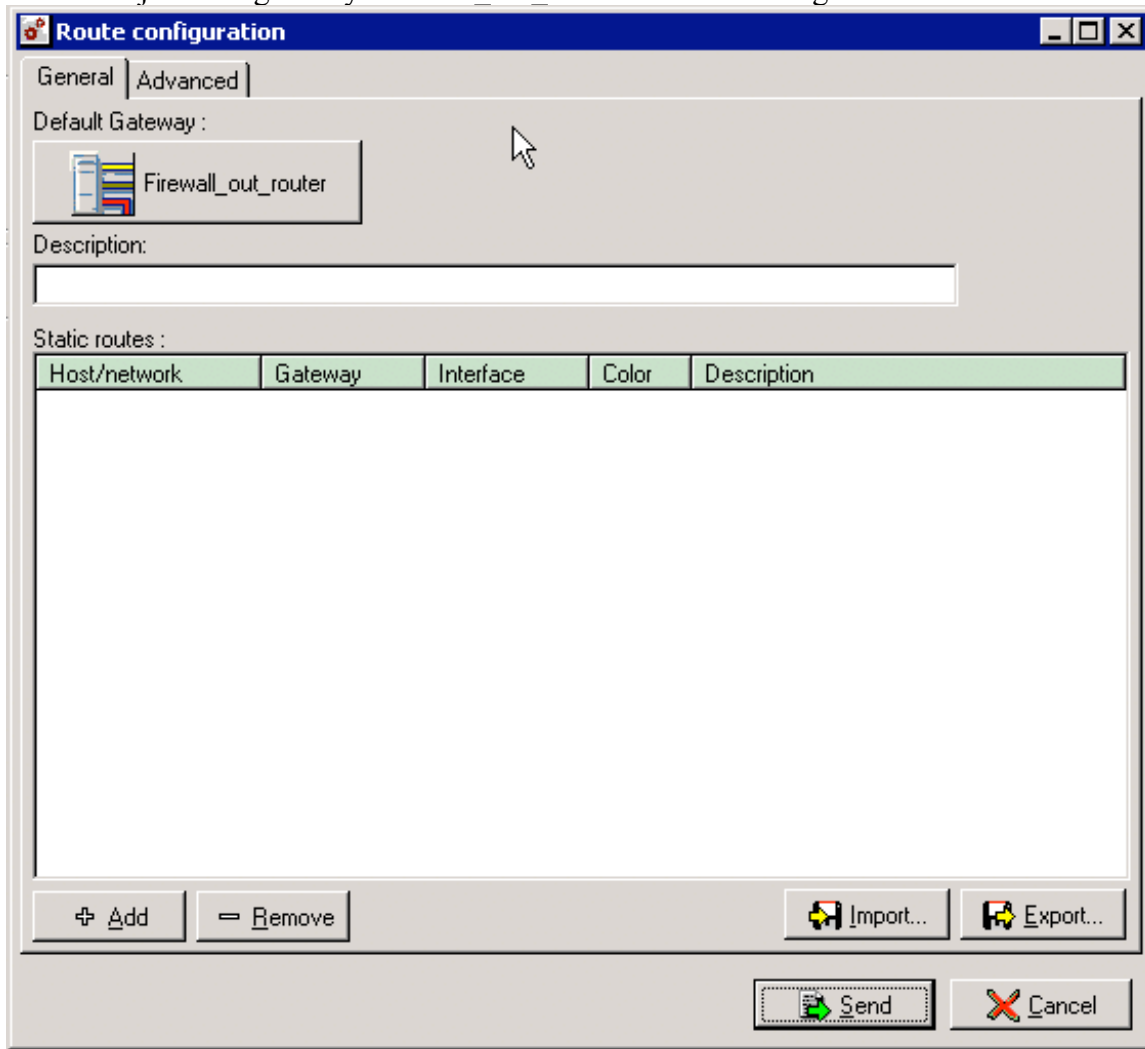


Ga vervolgens naar de DHCP tab.



Stel hier Get DNS servers in (en eventueel een hostnaam).
Kies vervolgens send en ga naar Routing.

Zet hier bij default gateway Firewall_out_router en kies vervolgens advanced



Zet hier gateway failover activated aan en kies no load balancing.

The image shows a 'Route configuration' dialog box with two tabs: 'General' and 'Advanced'. The 'Advanced' tab is selected. A yellow-highlighted text box at the top explains that main gateways are replaced by backup ones when the number of functional main gateways is under a threshold, and that the first main gateway (or the first backup gateway if the main is broken down) will be used as the default route. Below this, the 'Gateway failover activated' checkbox is checked. Underneath, three radio buttons are present: 'No load balancing' (selected), 'Load balancing by source', and 'Load balancing by destination'. There are two table sections: 'Main gateways' and 'Backup gateways'. The 'Main gateways' table has one entry with 'Host' 'Firewall_out_router' and an empty 'Description' field. The 'Backup gateways' table is empty. To the right of these tables are control buttons: a plus sign (+), a minus sign (-), an up arrow (↑), a down arrow (↓), and a double-headed arrow (↕). At the bottom, there is a text input field for 'Minimum number of active principal gateways before activating backup gateways' with the value '1'. Finally, there are 'Send' and 'Cancel' buttons.

Route configuration

General | **Advanced**

Main gateways are replaced by backup ones when the number of functional main gateways are under the threshold.
When there's not any load balancing, the first main gateway (or the first backup gateway if the main is broken down) will be used as the default route.

Gateway failover activated

No load balancing

Load balancing by source

Load balancing by destination

Main gateways:

| Host | Description |
|---------------------|-------------|
| Firewall_out_router | |

Backup gateways:

| Host | Description |
|------|-------------|
|------|-------------|

Minimum number of active principal gateways before activating backup gateways:
1

Send Cancel

Nu zou het moeten werken.