

Technical Note #053

Auteur: Netasq

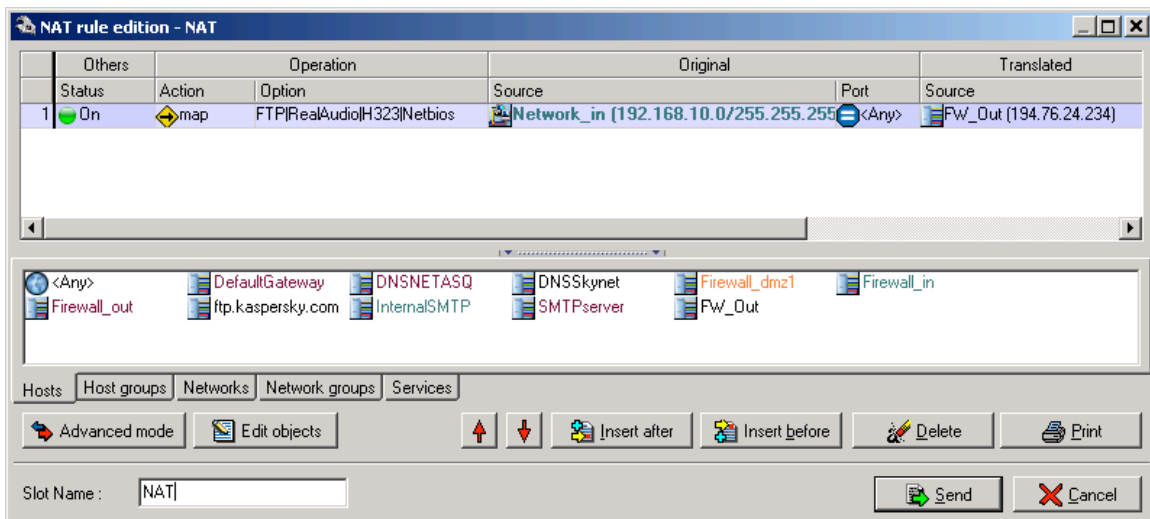


How to scan INCOMING SMTP traffic with NETASQ's embedded Kaspersky Antivirus with a NAT-ed SMTP server.

Note: With Version 5.0.x it's only possible to scan incoming OR outgoing SMTP traffic, not both simultaneously. Version 5.1 will support both directions simultaneously as well as POP3 scanning.

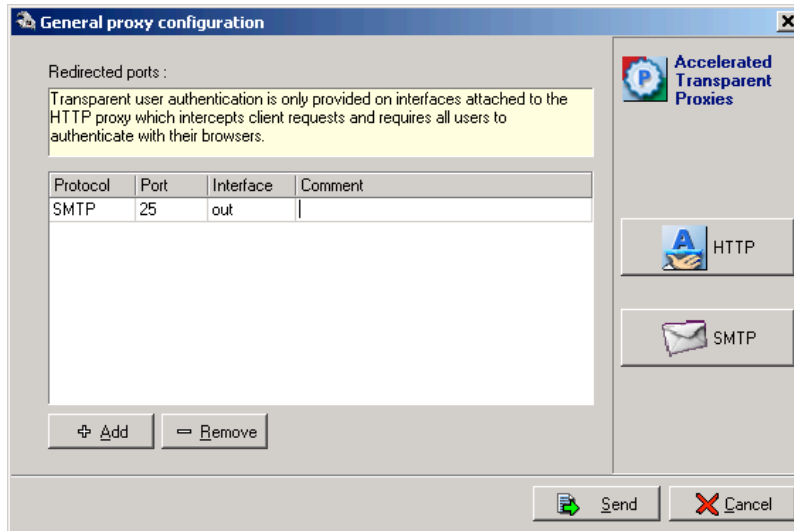
Step 1 - Configure NAT:

Do not add a redirect rule for your SMTP server, the SMTP proxy will handle this! The example just shows a MAP to make sure internal IP-addresses are translated to the Internet.



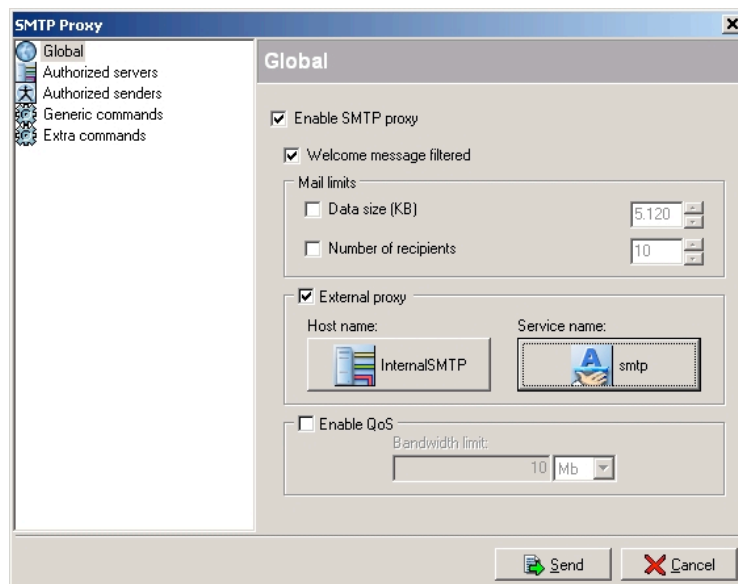
Step 2 - Configure General Proxy Configuration:

Add "Protocol SMTP, Port 25, Interface OUT" in the General Proxy configuration.



Step 3 - Configure SMTP Proxy:

"Enable" the SMTP Proxy and configure a REVERSE proxy by enabling the "External Proxy" and put the object of your INTERNAL SMTP server there. Service = SMTP (port 25). Do not forget to configure the Authorized senders and servers (make sure authorized senders is UNCHECKED)!



Step 4 – Enable embedded Kaspersky Antivirus:

Enable Kaspersky and make sure the license key is installed and update the database manually the first time.

