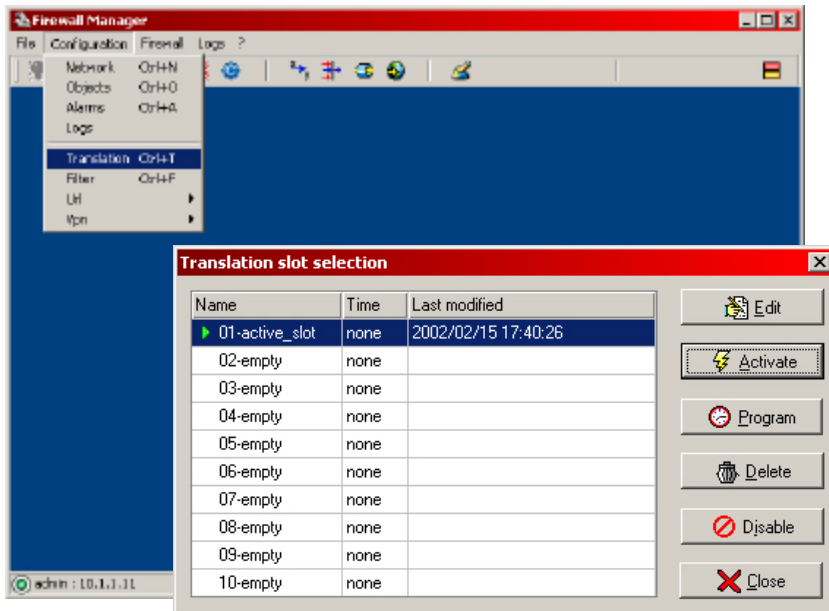


Netasq Firewalls

Redirect and
Split
translations

NETASQ
Secure Internet Connectivity





The **NETASQ** firewall safeguards your internal network. Its function is to filter all the traffic in transit between the LAN and the Internet.

Internal IP addresses must be masked, for two main reasons – first for security reasons to prevent the address of a terminal becoming known on the Internet and secondly, to comply with IP addressing rules used on the Internet (RFC1918: public and private addresses).

The NETASQ solution

The **NETASQ** firewall allows you to hide your internal addresses by translating them. You can use either map address translation (1 public address for several private addresses) or map bi-directional translation (1 public address for 1 private address).

The **NETASQ** firewall offers you two further types of translation – Redirect or Split – for even greater security.

Redirect translation redirects certain traffic, depending on the IP address and the destination port. The Split translation offers you the possibility of dividing the load between several identical providers (mail providers, FTP providers etc.).

Redirect translation: The security and economy of public addresses

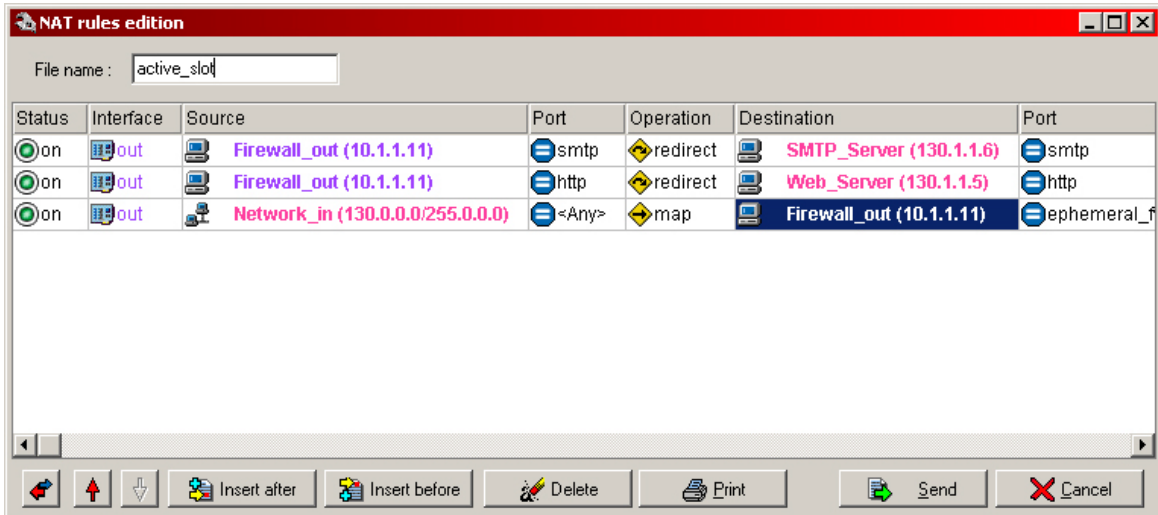
Redirect translation redirects the traffic arriving on an interface, depending on the address and the destination port number. The firewall translates the associated addresses to the port translation. Le Firewall fait de la translation d'adresses associée à de la translation de port. **** translator's note – verify French ****

This translation gives you greater security as it only redirects the traffic arriving at a specific port to your provider. All the other ports are blocked, regardless of the specified filtering rules.

Furthermore, Redirect translation allows you to economise on 1P public addresses and thus to avoid many inconveniences (costs, the need to change the addressing range etc.). In this way you can access the Internet from your LAN and your public providers with a single public address (your Firewall address).

Exemple de configuration :

A classic configuration would be to redirect all the requests arriving on the external interface of the Firewall on port 80 to a Web provider in a DMZ. This method can be applied to all your public providers (SMTP, FTP etc.).



Adding a rule to your translation menu indicating the source address and the source port to be redirected, along with the destination address and the destination port configures a redirect.

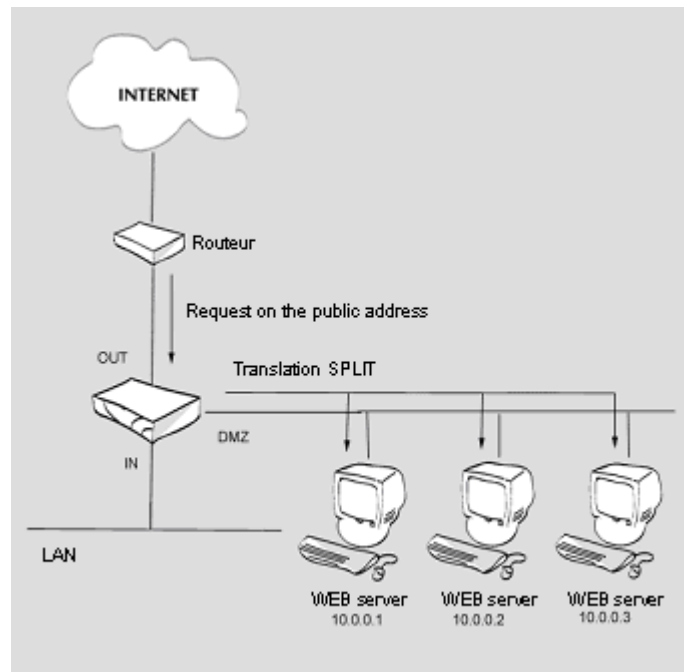
In this way you can set up safe and complex architecture with a single public address - you need no new public address.

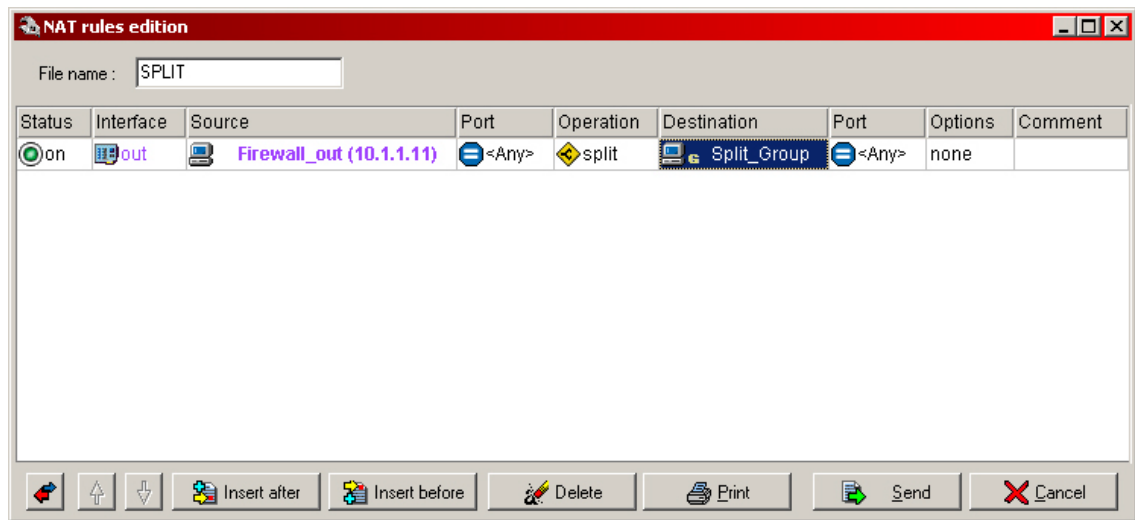
Split translation: Increased availability of your providers

Split translation is a tool, which allows you to divide the requests destined for one provider to several identical providers. You can combine this function with a port translation (same principle as Redirect).

The **NETASQ** firewall's operation is very simple: it uses a sequence method. A different provider is contacted for each new connection. It is therefore very important to have identical configurations.

Thus if one of your providers is overloaded you simply add an identical machine and divide the connections. This enables you to preserve your architecture whilst improving the availability of your applications.





Our graphic interface configuration makes a Split very easy to configure. You only need to redirect the traffic arriving at the public address to a group of IP addresses (see above).